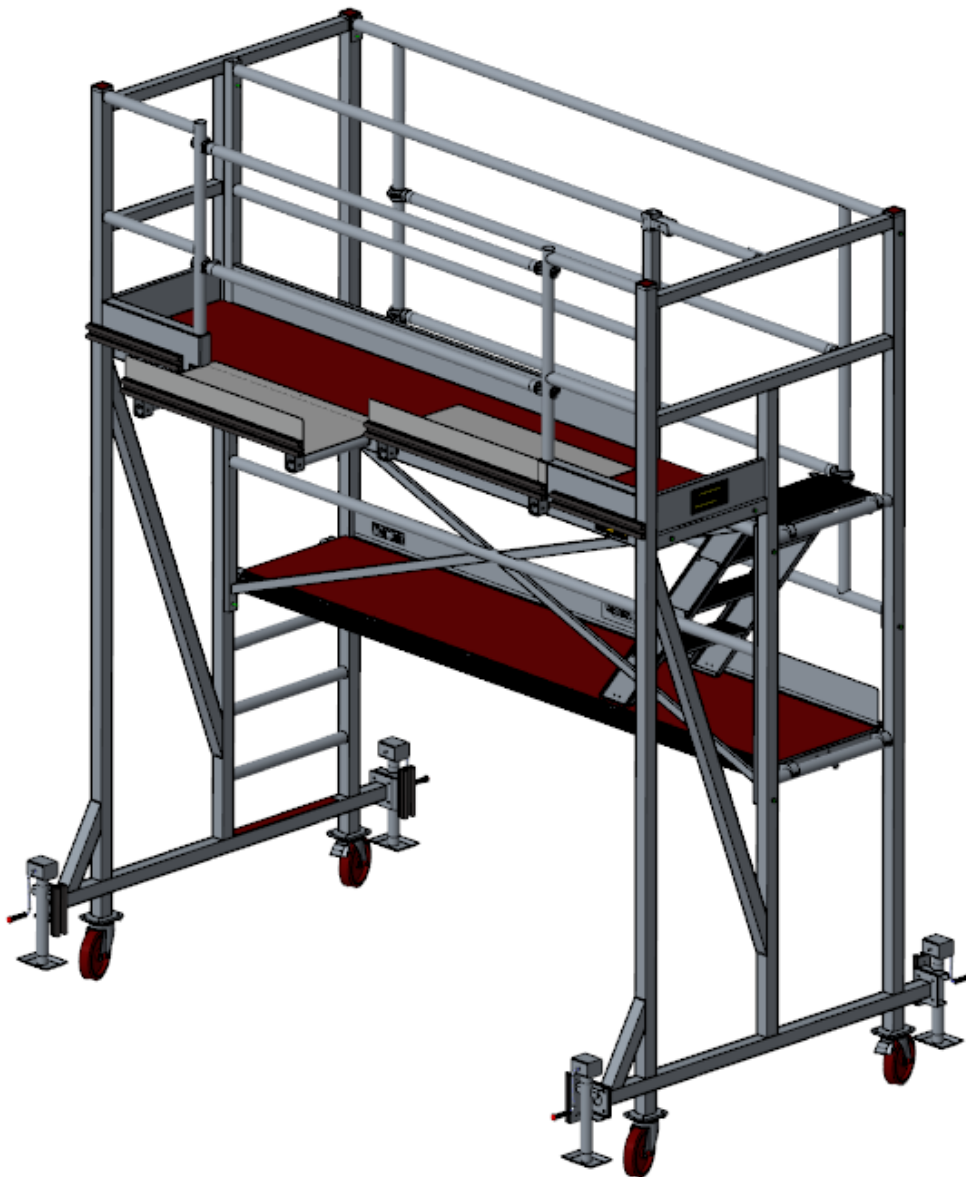




INSTRUCTION MANUAL



CUSTERS® HANDY TRUCKSCAFFOLD

MAY 2021

CONTENT

1. INTRODUCTION.....	3
2. COMPONENTS.....	4
3. ASSEMBLY	8
4. MOUNTING INSTRUCTION.....	11
5. USE.....	20
6. MOVING	20
7. MAINTENANCE	21

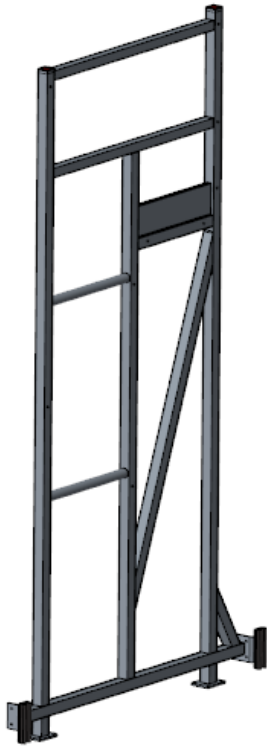
1. INTRODUCTION

The truck scaffold has been conceived for safe working at height on truck cabins. It offers the possibility to work on 2 different height levels (platform height 1.5 m and 2.7 m) on the front and rear side of the truck cabin.

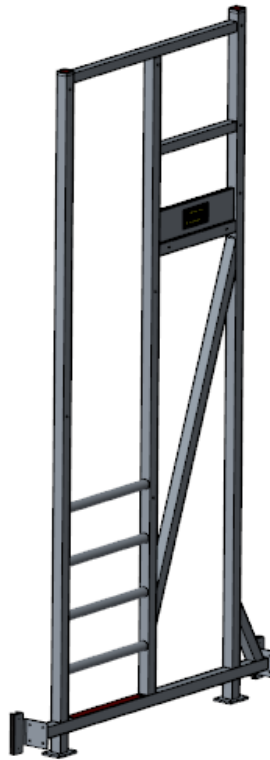
The truck scaffolds have been equipped with protective rubbers to avoid scratches and damages on the cabin.

The top platform can be extended to get closer to the truck cabin.

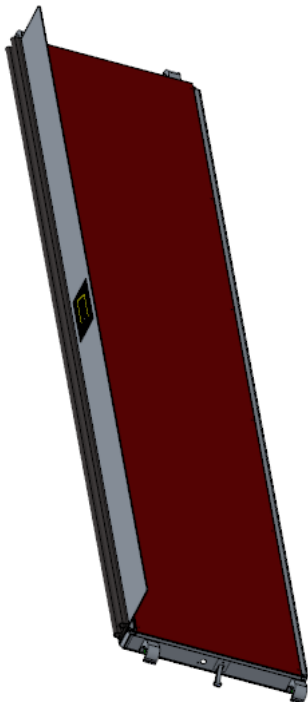
2. COMPONENTS



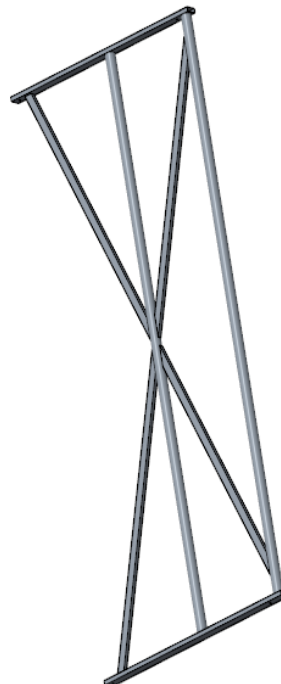
Nr. 1: Frame left
9501906025



Nr. 2: Frame right
9501906026



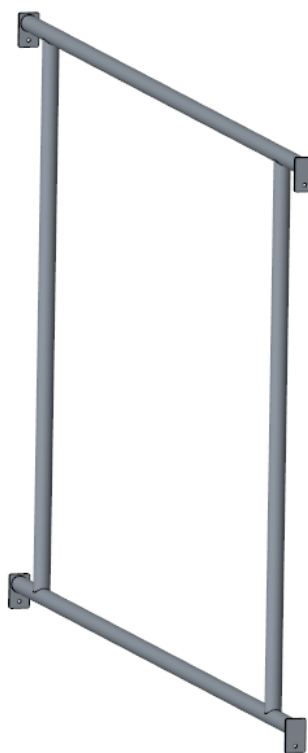
Nr. 3: Platform 1
9501906029



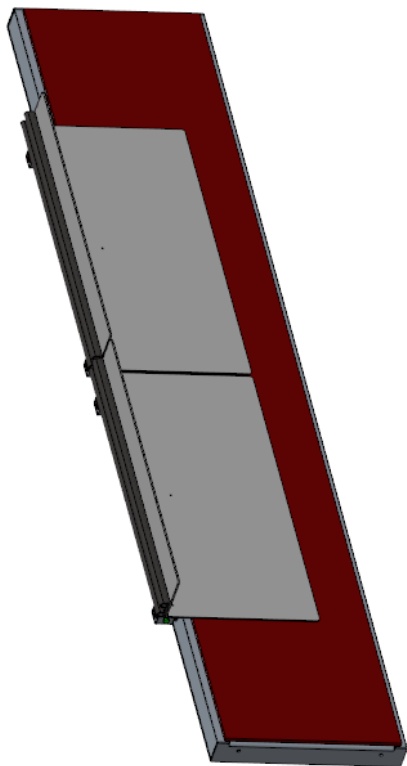
Nr. 4: Middle frame
9501906005



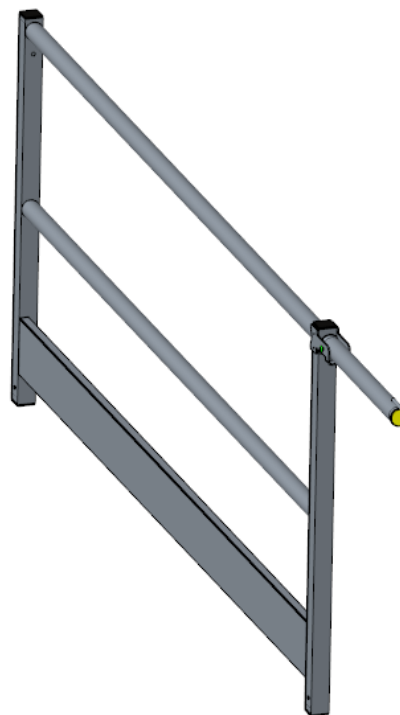
Nr. 5: Stairs
9501906078



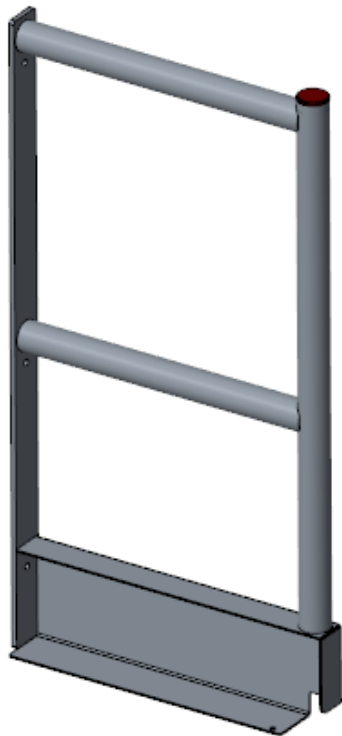
Nr. 6: Guardrail frame
9501906007



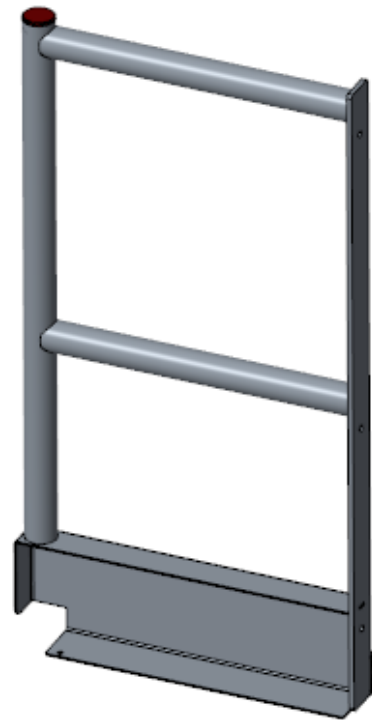
Nr. 7: Platform 2
9501906031



Nr. 8: Middle guardrail
9501906079



Nr. 9: Guardrail left
9501906081



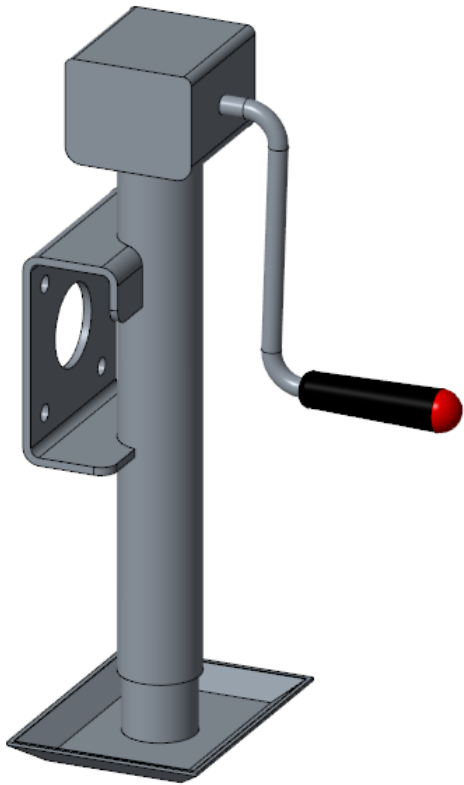
Nr. 10: Guardrail right
9501906082



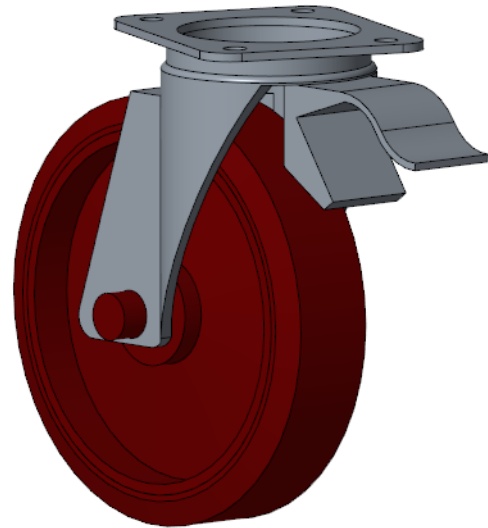
Nr. 11: Horizontal 1952
9501800045



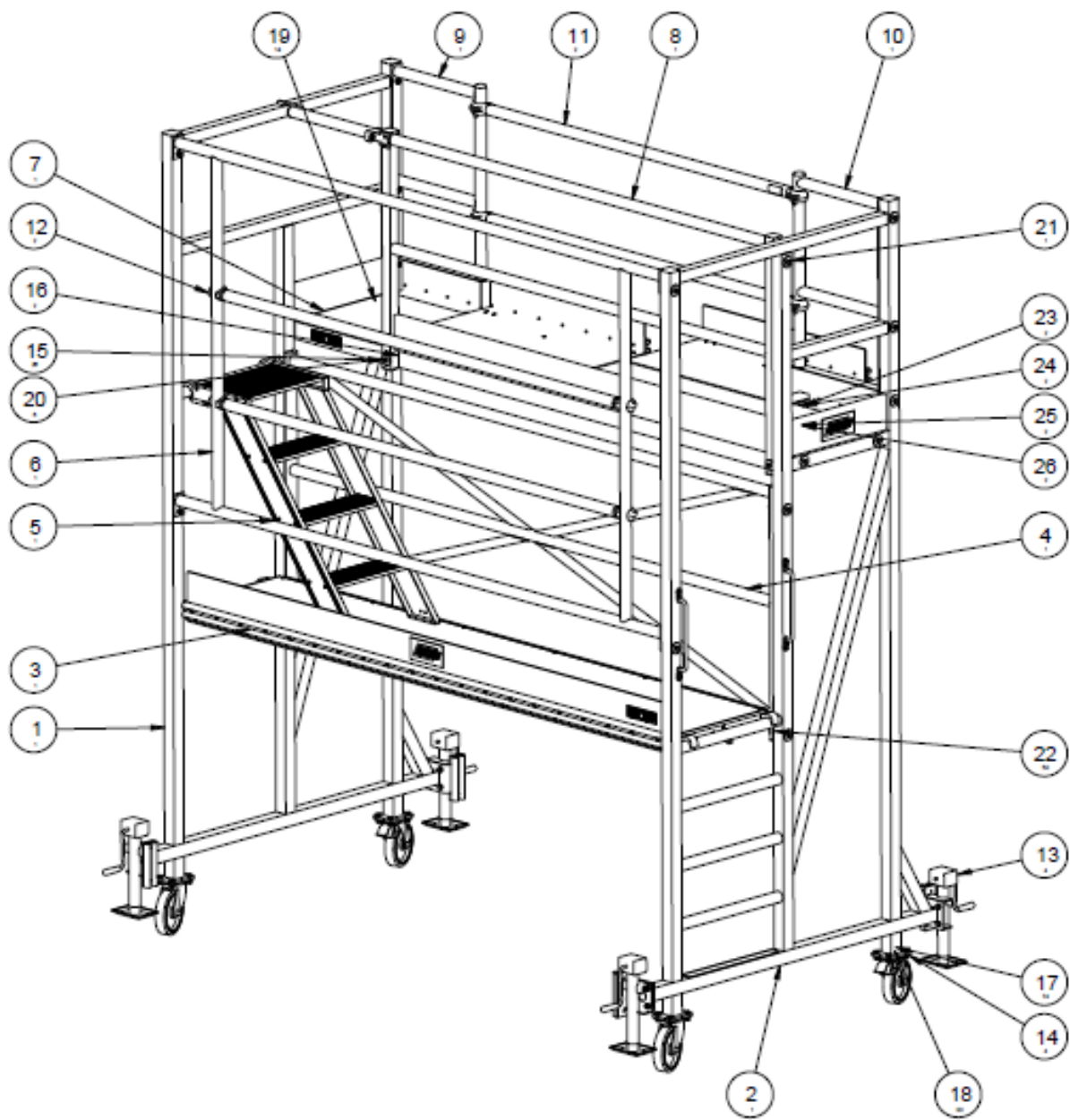
Nr. 12: Horizontal 2500
9501200030



Nr. 13: Parking support
6306100260



Nr. 14: Swivel wheel
6418004047



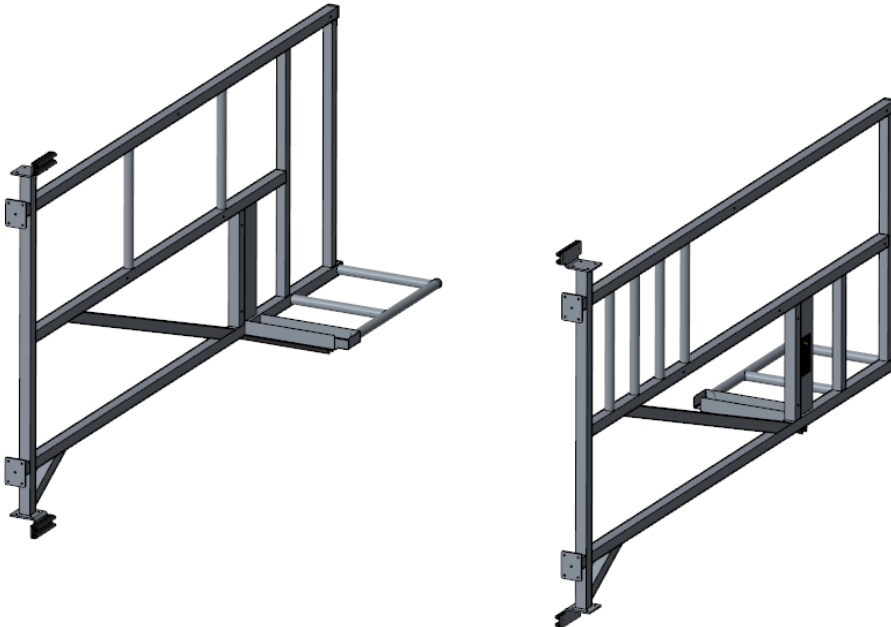
No.	Quantity	Description	Part number	Weight (kg)
1	1	Frame left	9501 906 025	33,03
2	1	Frame right	9501 906 026	34,39
3	1	Platform 1	9501 906 029	34,65
4	1	Middle frame	9501 906 005	11,48
5	1	Stairs	9501 906 078	7,74
6	1	Guardrail frame	9501 906 007	8,57
7	1	Platform 2	9501 906 031	51,22
8	1	Middle guardrail	9501 906 079	10,57
9	1	Guardrail left	9501 906 081	4,83
10	1	Guardrail right	9501 906 082	4,83
11	2	Horizontal 1952	9501 800 045	2,33
12	2	Horizontal 2500	9501 200 030	2,81
13	4	Parking support	6306 100 260	5,20
14	4	Swivel wheel	6418 004 047	3,60
15	20	Bodywork ring M10x50x3	2211 010 050	-
16	2	Bodywork ring M10	2213 010 000	-
17	72	Washer M10	2201 010 000	-
18	32	Bolt M10 x 30	2064 010 030	-
19	8	Bolt M10 x 85	2064 010 085	-
20	6	Bolt M10 x 110	2054 010 110	-
21	1	Bolt M10 x 130	2054 010 130	-
22	47	Self-locking nut M10	2124 010 000	-
23	2	Washer M8	2201 008 000	-
24	2	Bolt M8 x 100	2054 008 100	-
25	2	Bodywork ring M8	2213 008 000	-
26	2	Self-locking nut M8	2124 008 000	-

4. MOUNTING INSTRUCTION

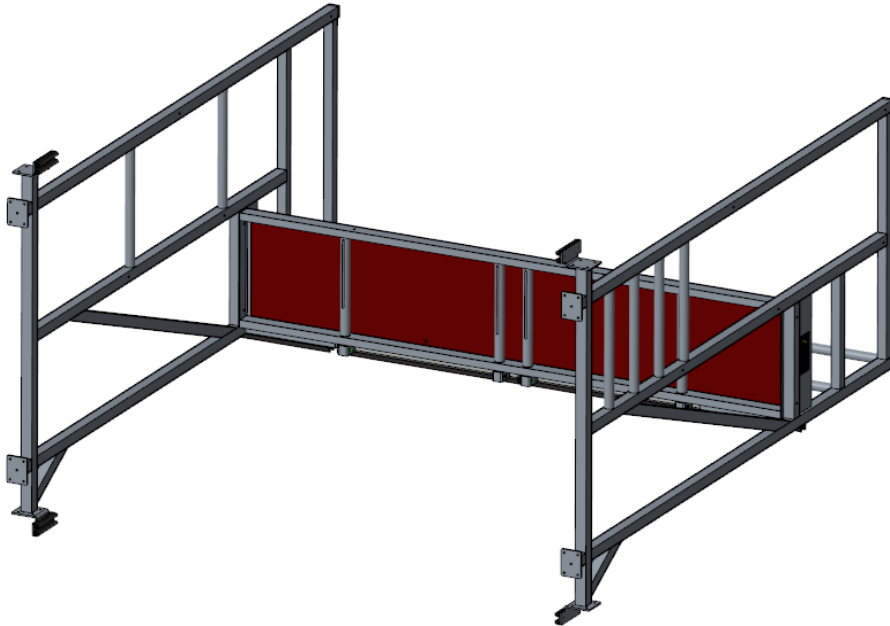
At first assemble the truck scaffold together but only mount the bolts and nuts by hand. At a later stage you will be asked to fasten all bolts and nuts to get the correct result.

1. Start the assembly by connecting the side frames to its corresponding guardrail. Connect the left frame (no.1) to the left guardrail (no.9) and connect the right frame (no.2) the right guardrail (no.10). Use the following connection material:
 - a. Bolt M10x85
 - b. Self-locking nut M10
 - c. Bodywork ring M10x50x3 (Side frame side)
 - d. Washer (Guardrail side)

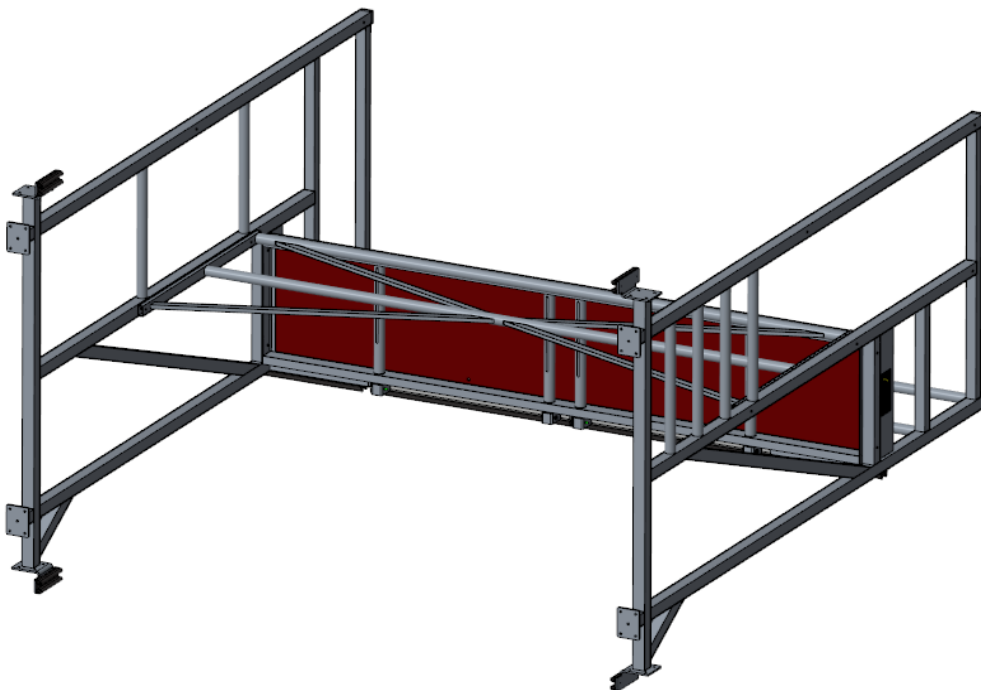
Make sure the frames are placed afterwards on the floor in a way both guardrails directing to each other, before you continue. See picture below.



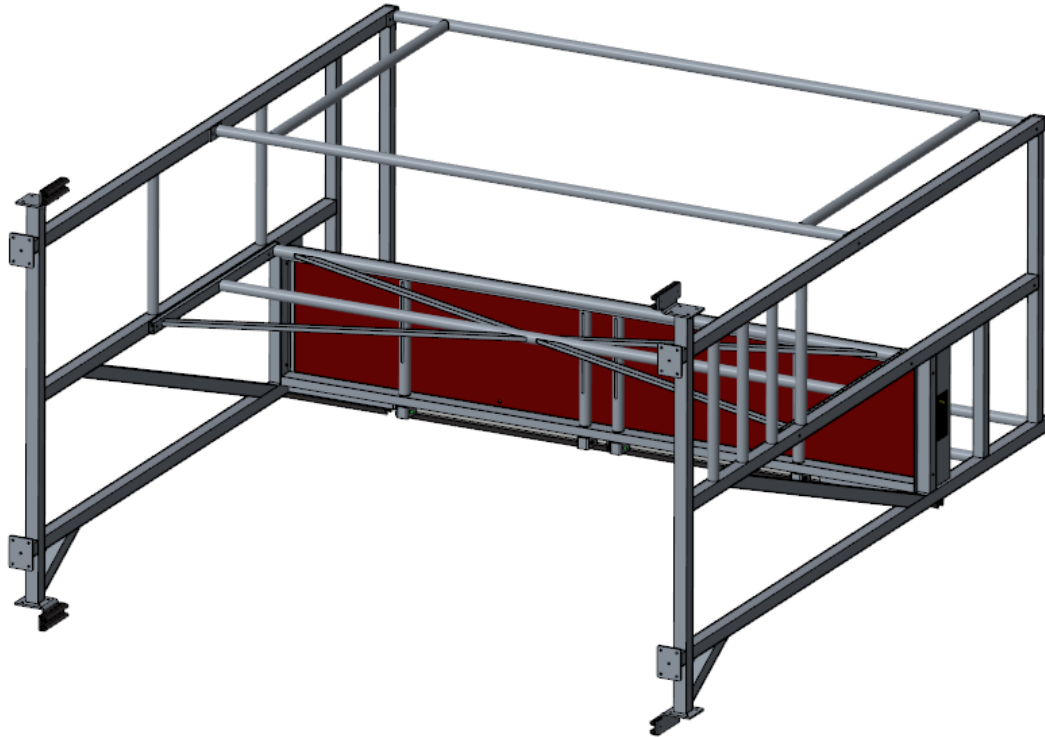
2. Mount platform 2 (no. 7) in between both frames by using
 - a. Bolt M10x85
 - b. Self-locking nut M10
 - c. Bodywork ring M10x50x3 (outside only)
 - d. Washer M10 (inside only)



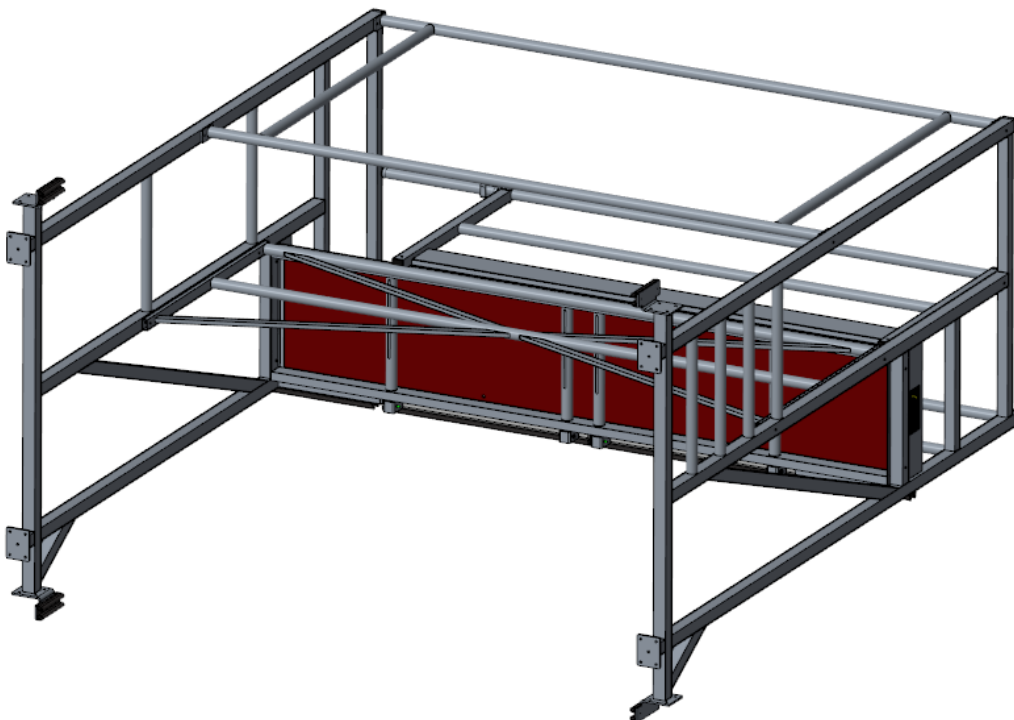
3. Mount the middle frame (no.4) in between both frames by using
 - a. Bolt M10x110 (head side of platform)
 - b. Self-locking nut M10
 - c. Bodywork ring M10x50x3 (both sides)
 - d. Bolt M8x100 (long side of platform)
 - e. Self-locking nut M8
 - f. Washer M8 (top)
 - g. Bodywork ring M8 (bottom)



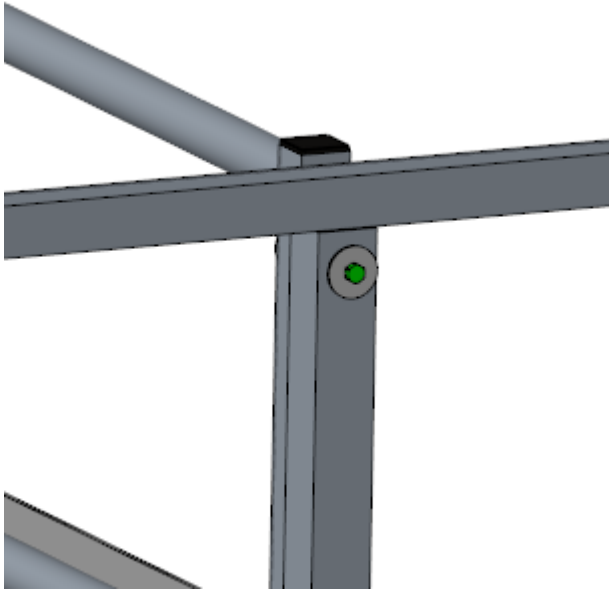
4. Mount the guardrail frame (no. 6) in between both frames by using
 - a. Bolt M10x85
 - b. Self-locking nut M10
 - c. Bodywork ring M10x50x3 (outside only)
 - d. Washer M10 (inside only)



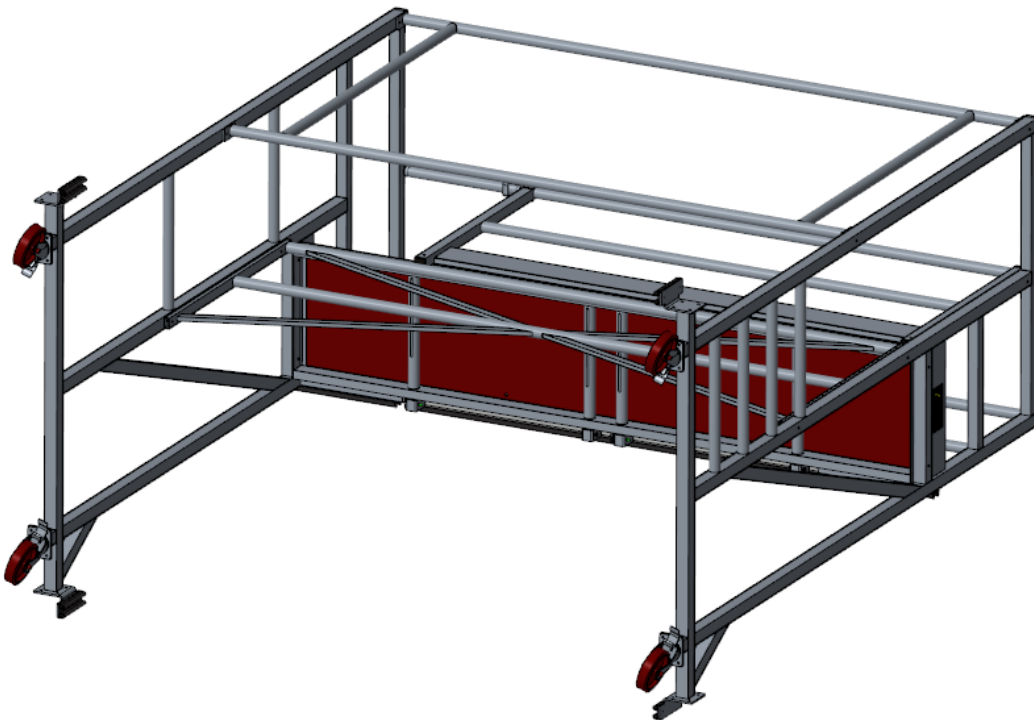
5. Mount the middle guardrail (no. 8) to the sidebar of platform 2 (no. 7) by use of a bolt M10x85. Use a bodywork ring M10x50x3 at the guardrail side and a bodywork ring M10 and a self-locking nut M10 at platform side.



6. Mount the top of the middle guardrail (no. 8) tot the frame right (no. 2) by using
 - a. Bolt M10x130
 - b. Self-locking nut M10
 - c. Bodywork ring M10x50x3 (both sides)

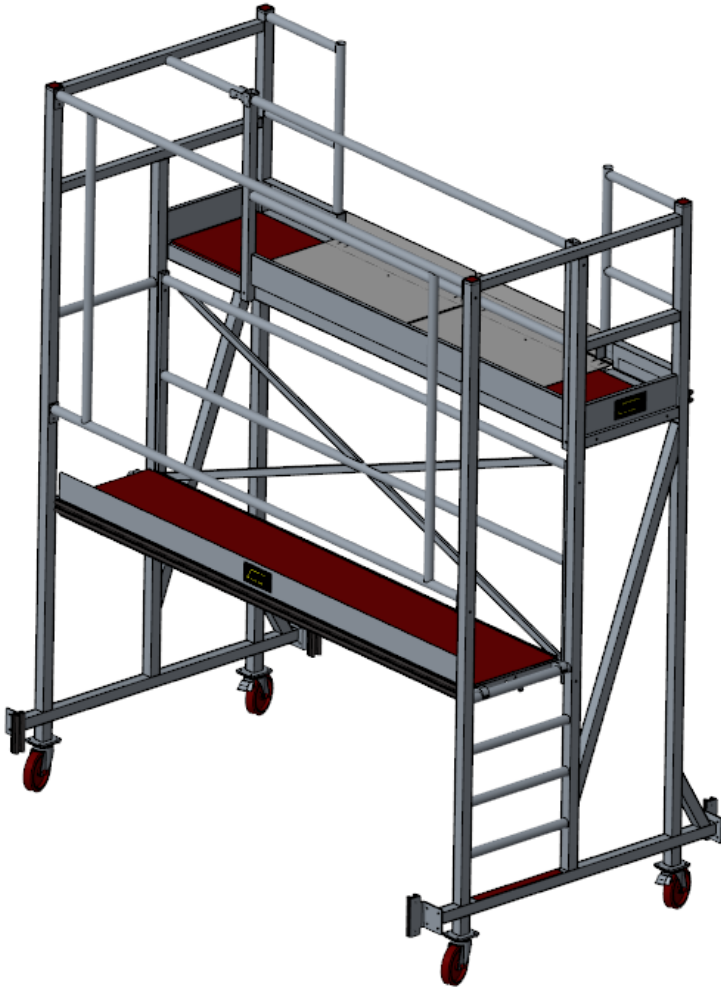


7. Mount the swivel wheels (no. 14) to the bottom of the truck scaffold by using
 - a. Bolt M10x30
 - b. Self-locking nut M10
 - c. Washer M10 (both sides)

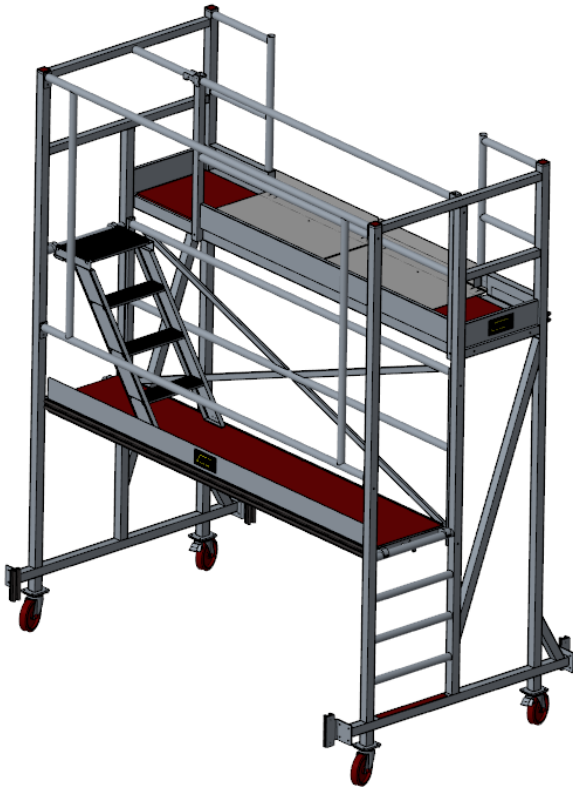


8. Put the truck scaffold in the up-right position, so it will be resting on its wheels. Activate the brakes of the swivel wheels before you continue and fasten all the bolts and nuts (prevent dents in the square tubes by putting too much force on the bolts and nuts).

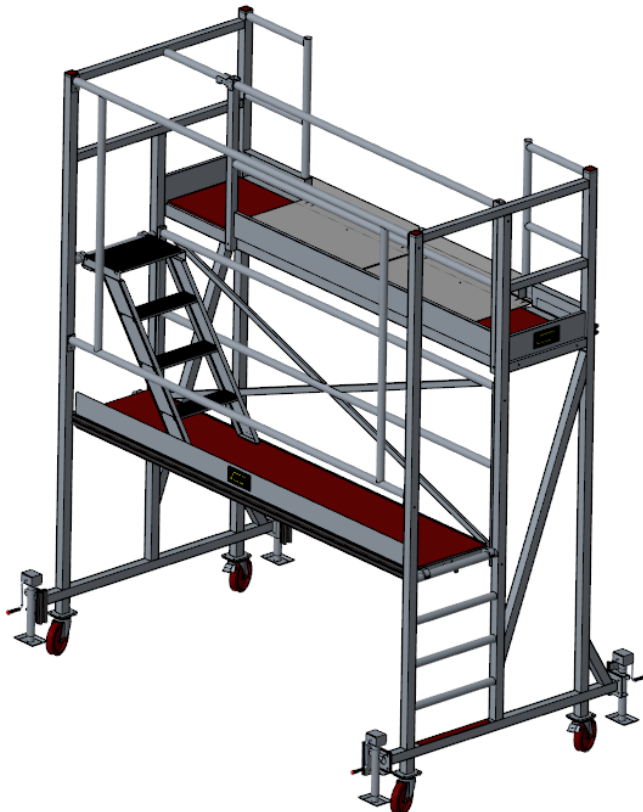
9. Mount platform 1 (no. 3) like the picture below and lock the wind securing-locks under the rungs at both sides.



10. Mount the stairs (no. 5) on top of the lower platform.



11. Mount the parking supports (no. 13) to the truck scaffold by using
a. Bolt M10x30
b. Self-locking nut M10
c. Washer M10 (both sides)



12. Place the horizontals (no. 12) to the guardrail frame (no. 6) just above the lower platform.



13. Place the horizontals (no. 11) to the left and right frame (no. 1 and 2) just above the highest platform.



14. The end result will be the truck scaffold like the picture below.

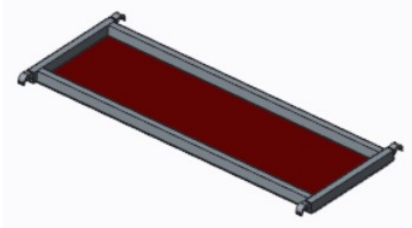


Optional:

a) 9501906109 Guardrail frame



b) 9501906069 Tools plateau



c) 9501906024 Handle (2 required each truck scaffold)



5. USE

- The erection of the scaffold as described in the operations manual must be done by at least two persons.
- The Safe Working Load per platform is 200 kg.
- The surface must be flat and hard enough.
- The area is free of obstacles, both on the ground and above.
- The truck scaffold is only for inside use.
- The truck scaffold may only be used when all 4 wheels are clear from the ground and the scaffold is fully resting on its parking supports.
- The brakes on the wheels must always be applied except during moving/rolling of the scaffold.
- The horizontals (no. 11 and 12) must always be mounted except for situations where the distance between scaffold and truck is less than 10 cm.
- It is not allowed to jump on platforms.
- The truck scaffold can only be entered by the intended entrance opening.
- Plaats geen kisten, trappen of andere hulpmiddelen op de werkvloer om hoogte te winnen.
- Do not put boxes, stairways or other equipment on the platform in order to gain a height.
- The horizontals (guardrails) are not to be used as a step.
- Do not expose the truck scaffold to aggressive liquids or gasses.

6. MOVING

The truck scaffold is only to be rolled by hand from the ground. Make sure the parking supports are well clear from the ground and unlock the wheel brakes; the scaffold can now be moved. During this move you may not exceed the normal walking speed and no persons or materials are allowed on the scaffold during this move. Be aware of obstacles that could be above or on the ground when you roll the scaffold. You should be very careful when the scaffold is rolled over bad surfaces (inclined planes, insufficient load-carrying capacity, holes etc.) Put the brakes on the wheels when no further moving is needed.

7. MAINTENANCE

All parts, particularly the pivoting parts and the welding, must be inspected regularly, at least once every year on wear and tear. Lost or damaged parts must be replaced. Aluminium scaffolding parts are not allowed to be used in the following cases:

- when round tubes have one or more dull dents with a depth of more than 3,0mm.
- when round tubes have one or more dents directly next to a welding junction, in spite of the dept or shape of the dent.
- when square or rectangular tubes have one or more dull dents with a depth of more than 2,0mm.
- when round or square tubes have one or more sharp dents or cracks (tears), regardless lengths, depth or location of these dent(s) and tears.

Pivoting parts, among others castor wheels, must be clean and run smoothly. Repair of scaffold-material is only possible in consultation with the manufacturer.



Custers Hydraulica B.V.
Postbus 22
5800 AA Venray
Nederland

Tel. +31 (0) 47 85 53 000
Fax +31 (0) 47 85 53 010

E-mail: info@custers.nl
Website: www.custers.nl